

THE MAGIC LANTERN: Its Construction and Use. Bound in Cloth, 6d.

ESTABLISHED
1852.

TRADE

"OPTIMUS"

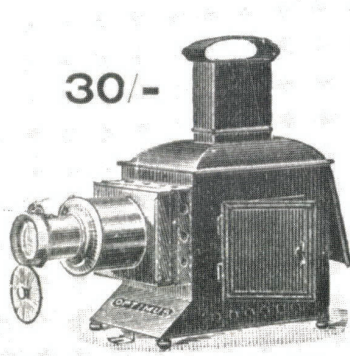
MARK.

CATALOGUE
POST FREE.

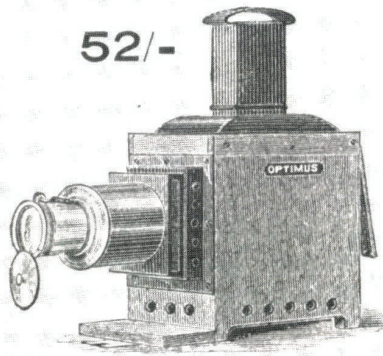
"OPTIMUS" MAGIC LANTERNS SUITED FOR DRAWING ROOM AND LECTURE HALL.

Linelight may be adapted without alteration at an extra cost of 13/- or in lieu of lamp, 7 6.
Incandescent Gas Burner " " " " " " 13 - " " " " 7 6.

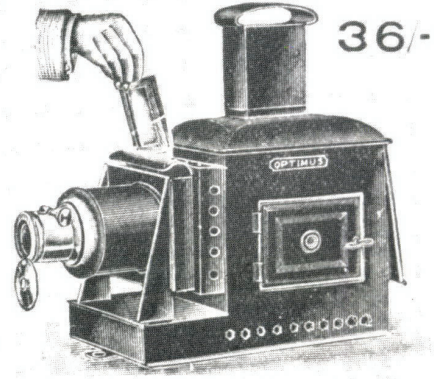
Each Magic Lantern is efficient for Exhibitions. The Lens gives crisp definition, being a superior Achromatic Photographic Combination with rack and pinion. It is fitted to a telescopic lengthening tube, so gaining increased focal accommodation. The condenser is composed of two plano-convex lenses of 4 inches diameter. The refulgent lamp has three wicks, yielding a brilliantly illuminated picture. Each is in box (except the 21s. instrument).



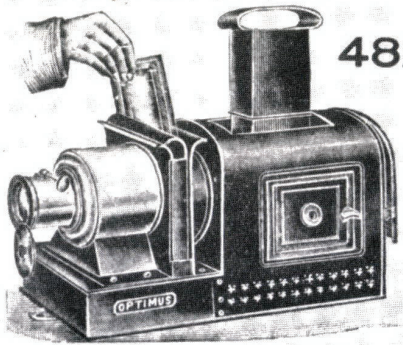
Superior Japanned Metal Body, 30/-
Second Quality do. 21/-



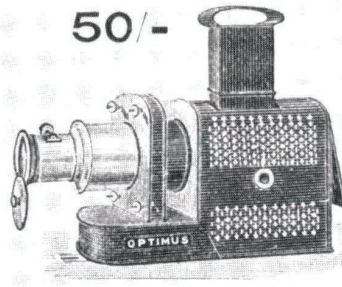
Mahogany Outside Body, Lined with Metal,
Japanned Fronts. 52/-



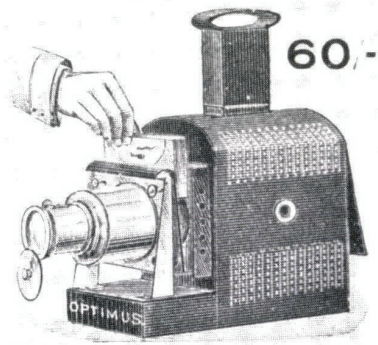
College Lantern, Superior Japanned Metal
Body. 36/-



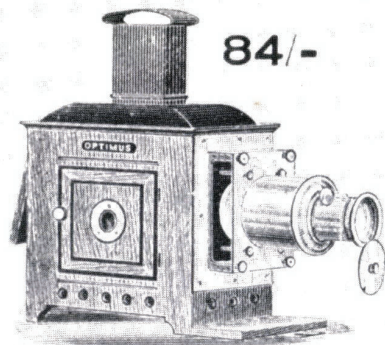
College Lantern, Russian Iron Body,
Brass Sliding Tubes. 48/-



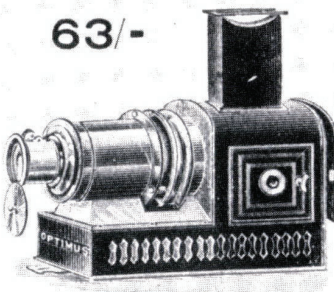
Perforated Russian Iron Body,
Brass Sliding Tubes. 50/-



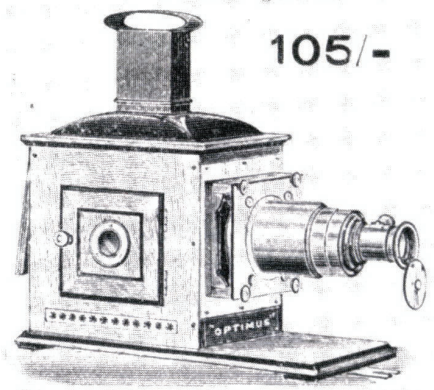
"Student's" Perforated Russian Iron Body
Brass Sliding Tubes. 60/-



Mahogany Body Lantern. 84/-



Russian Iron Body, Adjustable Brass
Stage and Front Tubes. 63/-



Superior Mahogany Outside Body, Lined with
Metal, highly-finished Brass Stage and 3-draw
Telescopic Tubes. 105/-

We supply Lanterns of Every Variety and Every Accessory for Lanternists.

PERKEN, SON & CO., LIMITED, 99, HATTON GARDEN, **LONDON.**
Lantern Photographs of Various Countries and Peoples. Plain, 1/-; Coloured, 1/6.

The Magic Lantern Exhibition is organised by the Architectural Association

This journal-cum-catalogue is published and financed jointly by the Magic Lantern Society of Great Britain and the Architectural Association.

Editor: Tony Dugdale, assisted by Jackie Cooper. **Design:** Dennis Crompton, Tony Dugdale. **Photographs:** Gail Tandy.

Typesetting: Dominique Murray. **Research:** Su Beeby. **Printing:** E.G. Bond Ltd., London.

The organisers are particularly grateful to the following for the loan of equipment, slides and books: Professor Ashworth Librarian at the Central London Polytechnic, R. Morris, P. Busfield, D. Francis, J. Townsend, R. Opie; and to Alvin Boyarsky, Chairman of the Architectural Association, for his encouragement in staging the Exhibition.

ARCHITECTURAL ASSOCIATION SCHOOL OF ARCHITECTURE 36 BEDFORD SQUARE LONDON WC1 3ES